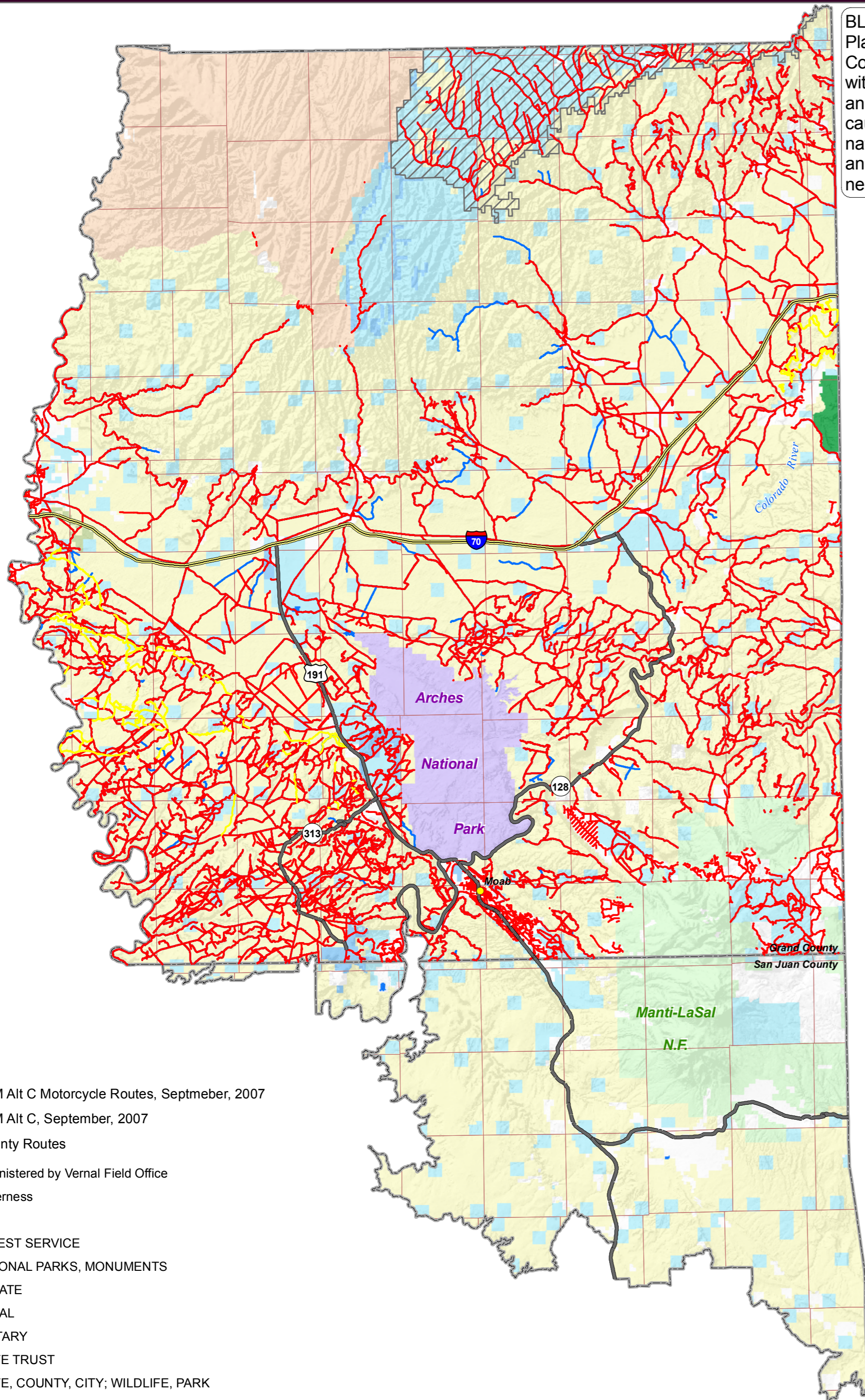
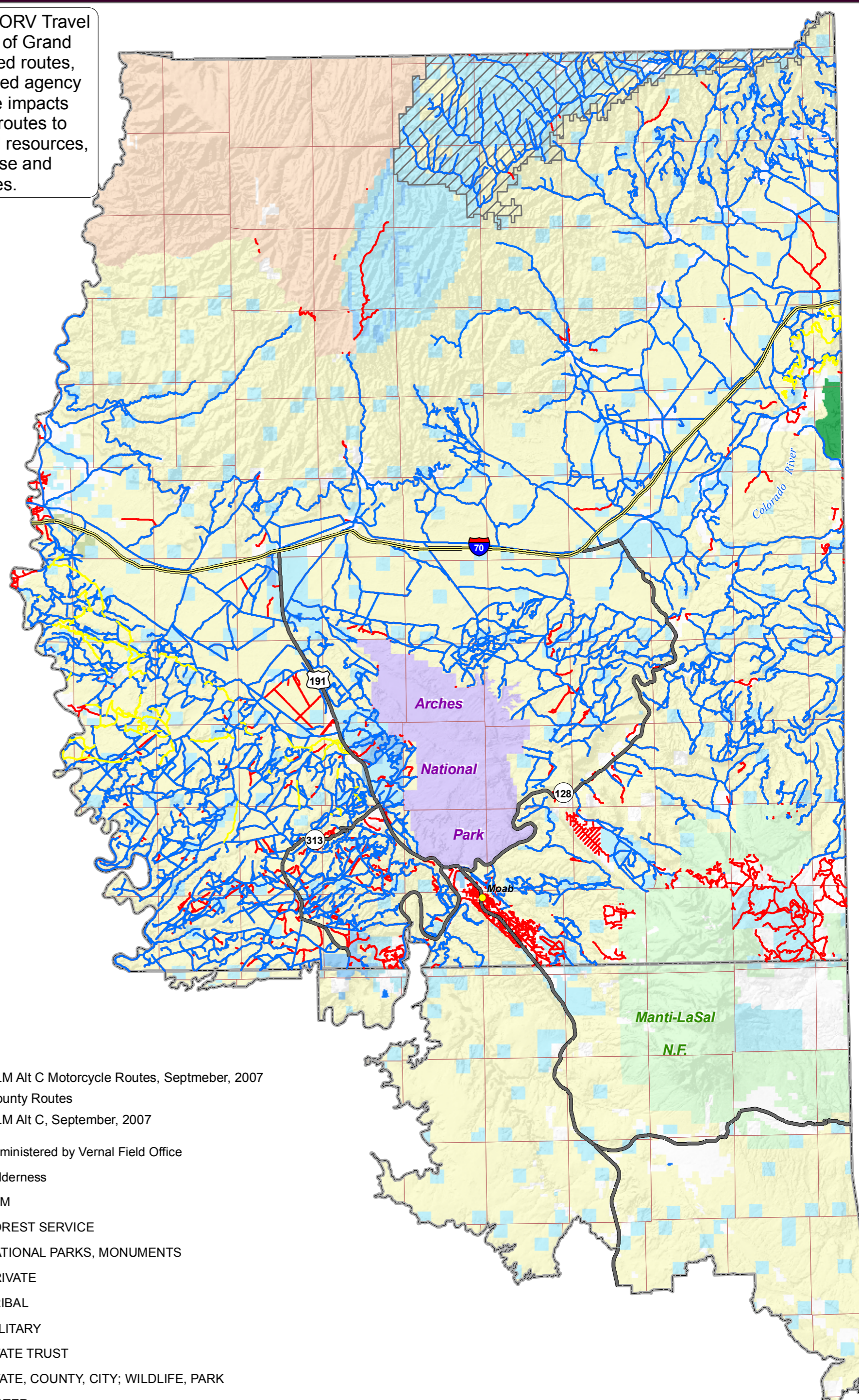


Moab BLM Route Proposal



BLM's proposed ORV Travel Plan adopts 97% of Grand County's requested routes, without the required agency analysis of: 1) the impacts caused by these routes to natural or cultural resources, and 2) the purpose and need for the routes.

Grand County Route Proposal



- BLM Alt C Motorcycle Routes, Septmeber, 2007
- BLM Alt C, September, 2007
- County Routes
- Administered by Vernal Field Office
- Wilderness
- BLM
- FOREST SERVICE
- NATIONAL PARKS, MONUMENTS
- PRIVATE
- TRIBAL
- MILITARY
- STATE TRUST
- STATE, COUNTY, CITY; WILDLIFE, PARK
- WATER

- BLM Alt C Motorcycle Routes, Septmeber, 2007
- County Routes
- BLM Alt C, September, 2007
- Administered by Vernal Field Office
- Wilderness
- BLM
- FOREST SERVICE
- NATIONAL PARKS, MONUMENTS
- PRIVATE
- TRIBAL
- MILITARY
- STATE TRUST
- STATE, COUNTY, CITY; WILDLIFE, PARK
- WATER