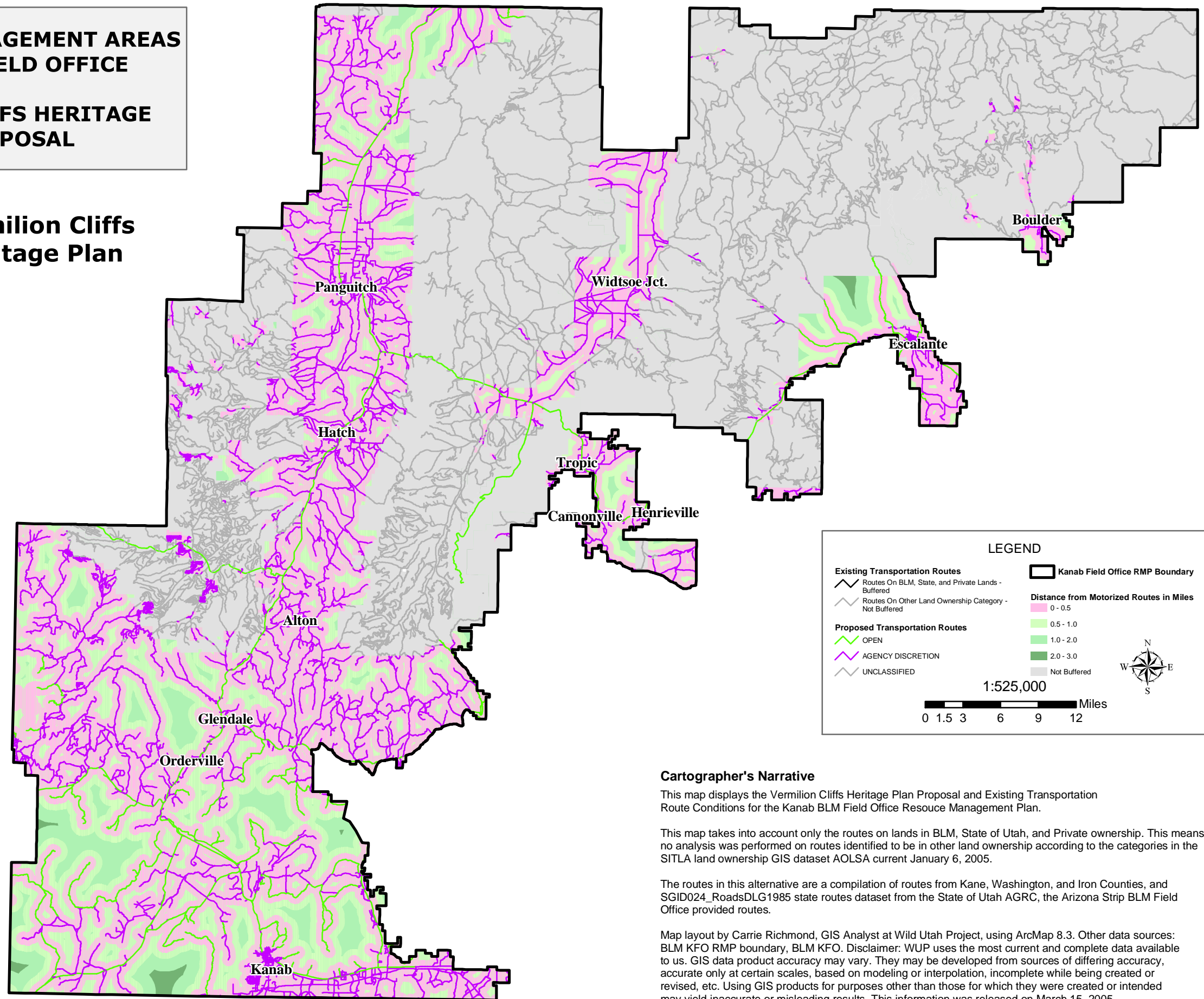


**RECREATION MANAGEMENT AREAS
KANAB BLM FIELD OFFICE
&
VERMILION CLIFFS HERITAGE
PLAN PROPOSAL**

**Vermilion Cliffs
Heritage Plan**



LEGEND

Existing Transportation Routes	Kanab Field Office RMP Boundary
Routes On BLM, State, and Private Lands - Buffered	Distance from Motorized Routes in Miles
Routes On Other Land Ownership Category - Not Buffered	0 - 0.5
Proposed Transportation Routes	0.5 - 1.0
OPEN	1.0 - 2.0
AGENCY DISCRETION	2.0 - 3.0
UNCLASSIFIED	Not Buffered

1:525,000

0 1.5 3 6 9 12 Miles

Cartographer's Narrative

This map displays the Vermilion Cliffs Heritage Plan Proposal and Existing Transportation Route Conditions for the Kanab BLM Field Office Resource Management Plan.

This map takes into account only the routes on lands in BLM, State of Utah, and Private ownership. This means no analysis was performed on routes identified to be in other land ownership according to the categories in the SITLA land ownership GIS dataset AOLSA current January 6, 2005.

The routes in this alternative are a compilation of routes from Kane, Washington, and Iron Counties, and SGID024_RoadsDLG1985 state routes dataset from the State of Utah AGRC, the Arizona Strip BLM Field Office provided routes.

Map layout by Carrie Richmond, GIS Analyst at Wild Utah Project, using ArcMap 8.3. Other data sources: BLM KFO RMP boundary, BLM KFO. Disclaimer: WUP uses the most current and complete data available to us. GIS data product accuracy may vary. They may be developed from sources of differing accuracy, accurate only at certain scales, based on modeling or interpolation, incomplete while being created or revised, etc. Using GIS products for purposes other than those for which they were created or intended may yield inaccurate or misleading results. This information was released on March 15, 2005.

